

Sang-A

PLASTIC HOSE CONNECTOR



SANG-A PNEUMATIC CO., LTD.

#36, SEICHEON-RO 3-GIL, DASA-EUP,
DALSEONG -GUN, DAEGU, KOREA

TEL : 82-53-583-5200

FAX : 82-53-583-5208

<http://www.sanga2000.com>

E-mail : sang-a@sanga2000.com

CATALOGUE CAN BE CHANGED WITHOUT A NOTICE 201806

Application & Feature

- Easy and quick connection of hose, light and strong against impact.
- Used for a wide variety of models to meet all need.

Specification

Fluid	Air, Industrial Hot & Cold water	
Working Pressure Range	0~145PSI	0~10Kgf/cm ² (0~1MPa)
Working Temperature Range	-40~176°F	-40~80°C

Product Code System

PHC	LT	04	01
①	②	③	④

- ① Model
② Type

Hose Nipple	ST	Straight
	LT	Elbow
	TT	Tee

Hose Union	S	Straight
	RS	Reducer Straight
	L	Elbow
	T	Tee
	RT	Reducer Tee
	Y	Y
	Z	Cross

③ Tube Dia(ØD)

Code	03	04	05	06	09
Dia	Ø3	Ø4	Ø5	Ø6	Ø9
Code	10	13	16	19	25
Dia	Ø10	Ø13	Ø16	Ø19	Ø25

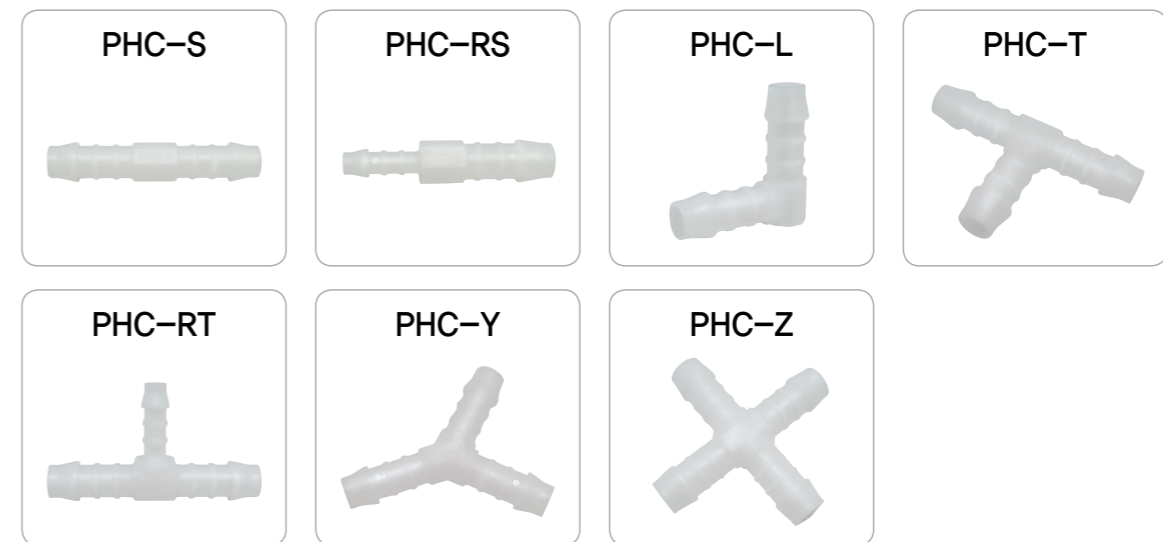
④ Size of Thread

	Metric Size	Taper Pipe Thread					
Code	M5	01	02	03	04	06	08
Size	M5x0,8	R1/8	R1/4	R3/8	R1/2	R3/4	R1

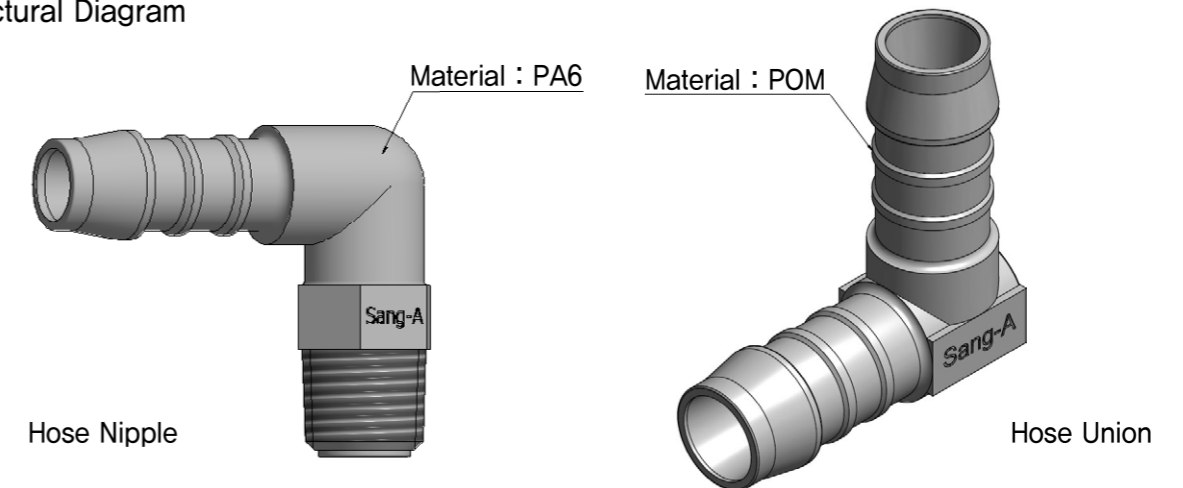
Plastic Hose Connector _ Hose Nipple List



Plastic Hose Connector _ Hose Union List



Structural Diagram



CAUTION

1. Avoid randomly product change.
2. Never over pushing to assemble product, it may cause damage.
3. Please check air leakage or not after built.

PHC-ST

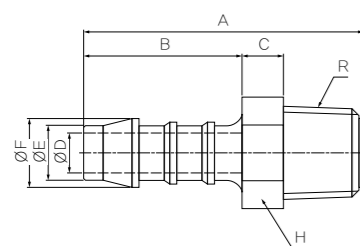


Table with columns: CODE, MODEL, A, B, C, ØD, ØE, ØF, R, H, W.G(g), Q' ty/Inbox (mm)

PHC-S

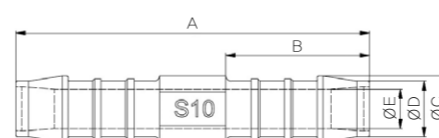


Table with columns: CODE, MODEL, A, B, ØC, ØD, ØE, W.G(g), Q' ty/Inbox (mm)

PHC-LT

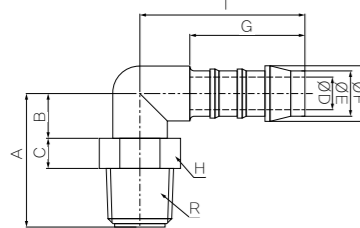


Table with columns: CODE, MODEL, A, B, C, ØD, ØE, ØF, G, H, I, R, W.G(g), Q' ty/Inbox (mm)

PHC-RS

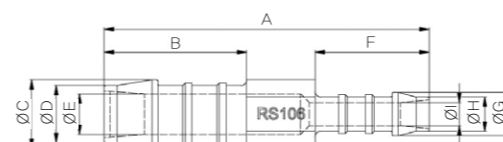


Table with columns: CODE, MODEL, A, B, ØC, ØD, ØE, F, ØG, ØH, ØI, W.G(g), Q' ty/Inbox (mm)

PHC-TT

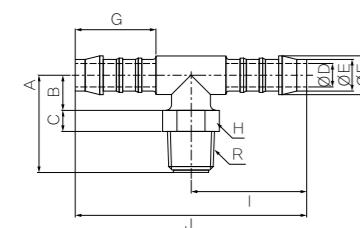


Table with columns: CODE, MODEL, A, B, C, ØD, ØE, ØF, G, I, J, R, H, W.G(g), Q' ty/Inbox (mm)

PHC-L

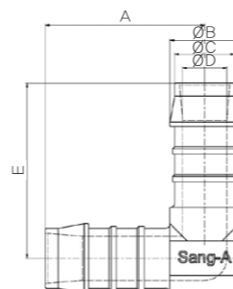
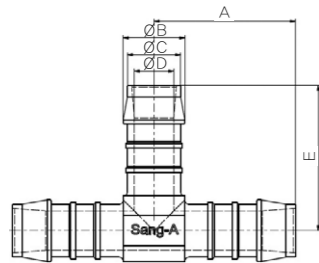


Table with columns: CODE, MODEL, A, ØB, ØC, ØD, E, W.G(g), Q' ty/Inbox (mm)

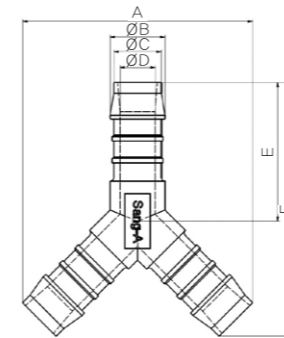
PHC-T



(mm)

CODE	MODEL	A	ØB	ØC	ØD	E	W.G(g)	Q'ty/ Inbox
90020300	PHC T03	12,8	4	3,2	2,6	12,9	0,4	100
90020400	PHC T04	18	5	4	3	19,5	0,8	100
90020500	PHC T05	20,6	6	5	3,5	22,1	1,1	100
90020600	PHC T06	24	7,6	6	4	25	2,1	100
90020900	PHC T09	28,5	11	9	6,6	29,5	4,3	50
90021000	PHC T10	32	12	10	7,1	33	6,1	50
90021300	PHC T13	34,5	15	13	9,6	35,5	9,7	20
90021600	PHC T16	40,5	18	16	12,1	44,5	16,5	20
90021900	PHC T19	43	21	19	15	46	20,2	16
90022500	PHC T25	49,5	27	25	21	52,5	31	6

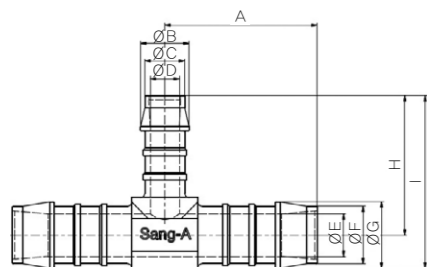
PHC-Y



(mm)

CODE	MODEL	ØA	ØB	ØC	D	E	W.G(g)	Q'ty/ Inbox
90040300	PHC Y03	4	3,2	2,6	22,7	20,1	0,3	100
90040400	PHC Y04	5	4	3,1	27,3	24,2	0,5	100
90040500	PHC Y05	6	5	3	44,4	38,7	1,8	100
90040600	PHC Y06	7,6	6	4	46,4	40,9	2,2	100
90040900	PHC Y09	11	9	6,6	54,3	48,6	4,6	50
90041000	PHC Y10	12	10	7,1	56,4	50,8	6	50
90041300	PHC Y13	15	13	9,6	69,4	62,8	11,1	25
90041600	PHC Y16	18	16	12,1	70,4	64,9	14,6	20
90041900	PHC Y19	21	19	15	74,9	69,8	18	16

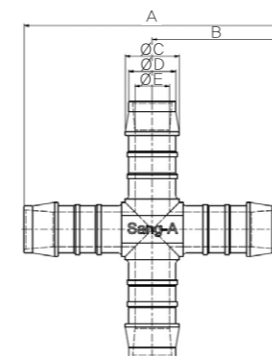
PHC-RT



(mm)

CODE	MODEL	A	ØB	ØC	ØD	ØE	ØF	ØG	H	I	W.G(g)	Q'ty/ Inbox
90033600	PHC RT0304	12,8	5	4	2,6	4	3,2	2,6	17,6	20,1	0,5	100
90033700	PHC RT0406	19	7,6	6	4	5	4	3,1	24	28	1,3	50
90034300	PHC RT0604	24	5	4	3,1	7,6	6	4	20	24	1,7	50
90033800	PHC RT0906	28,5	7,6	6	4	11	9	6,6	26,5	32	3,8	25
90033900	PHC RT1306	34,5	7,6	6	4	15	13	9,6	28,5	36	8,1	25
90034000	PHC RT1309	34,5	11	9	6,6	15	13	9,6	31,5	39	8,6	25

PHC-Z



(mm)

CODE	MODEL	A	B	ØC	ØD	ØE	W.G(g)	Q'ty/ Inbox
90050400	PHC Z4	40	20	5	4	3,1	1,1	100
90050600	PHC Z6	50	25	7,6	6	4	2,7	50
90051300	PHC Z13	71	35,5	15	13	9,6	12,6	15